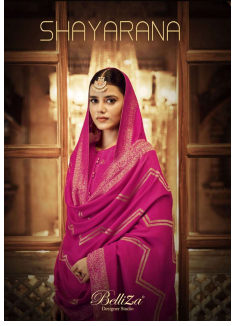




Asliwholesale



TOP FABRIC : Heavy Viscose Pashmina Weaving Jacquard With Handwork (2.50mtr)
BOTTOM FABRIC : Pure Pashmina Salwar(3.00Mtr)
DUPATTA FABRIC : Pure Heavy Viscose Pashmina Weaving Jacquard Shawl (2.30mtr)