

A woman with dark hair and light makeup is the central figure. She is wearing a light pink, long-sleeved kurta with intricate white floral embroidery. The embroidery is most prominent around the V-neckline and down the front. She is also wearing a matching pink and white patterned scarf. Her hands are clasped in front of her, holding a small white flower. She is wearing a pearl bracelet on her right wrist and a ring on her left hand. The background is a simple, warm-toned wall with a curved architectural element on the right.

SELVINA SILK
Vol.8

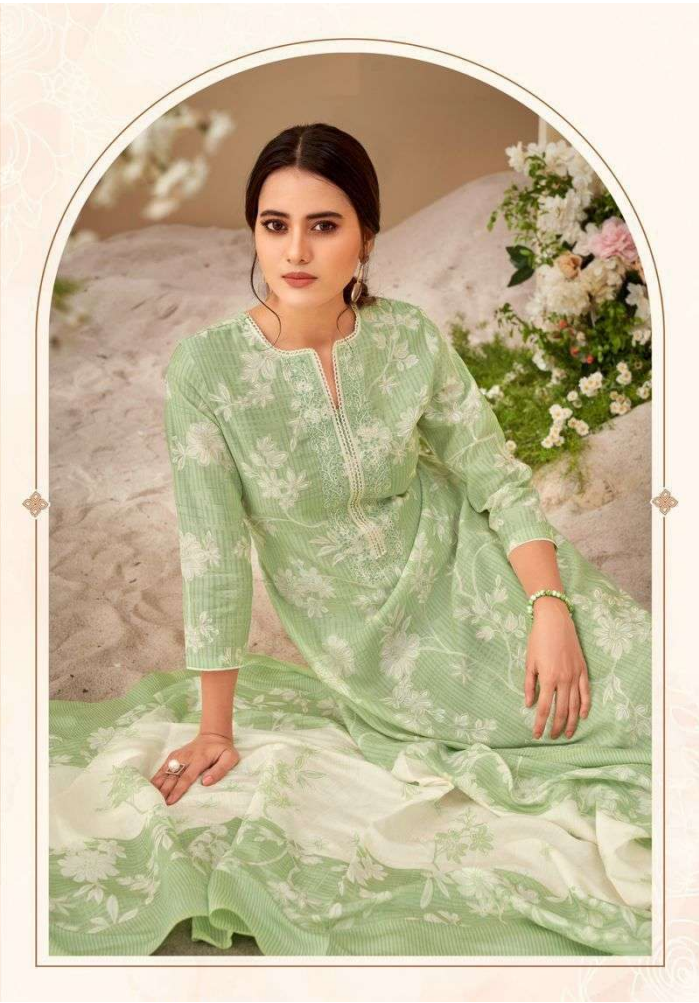


















8001



8002



8003



8004



8005



8006



8007



8008