



# KIMAYA





5057-BLUE







  
5057-BLACK

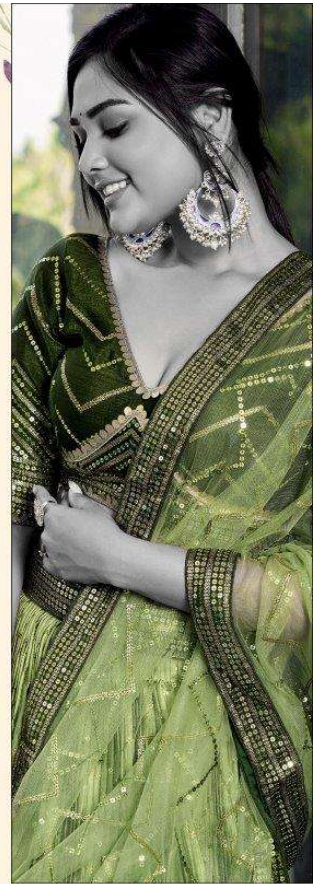
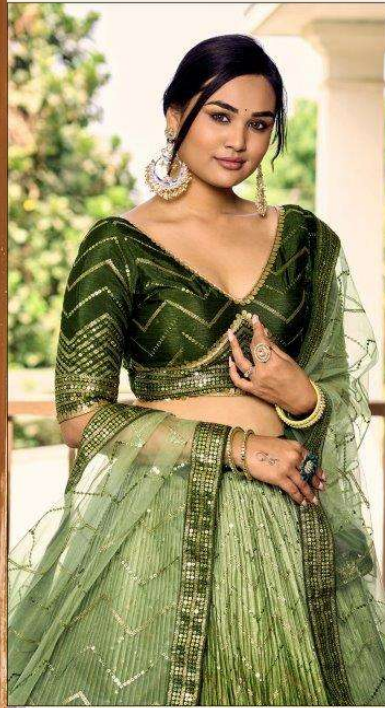




5057-PURPLE







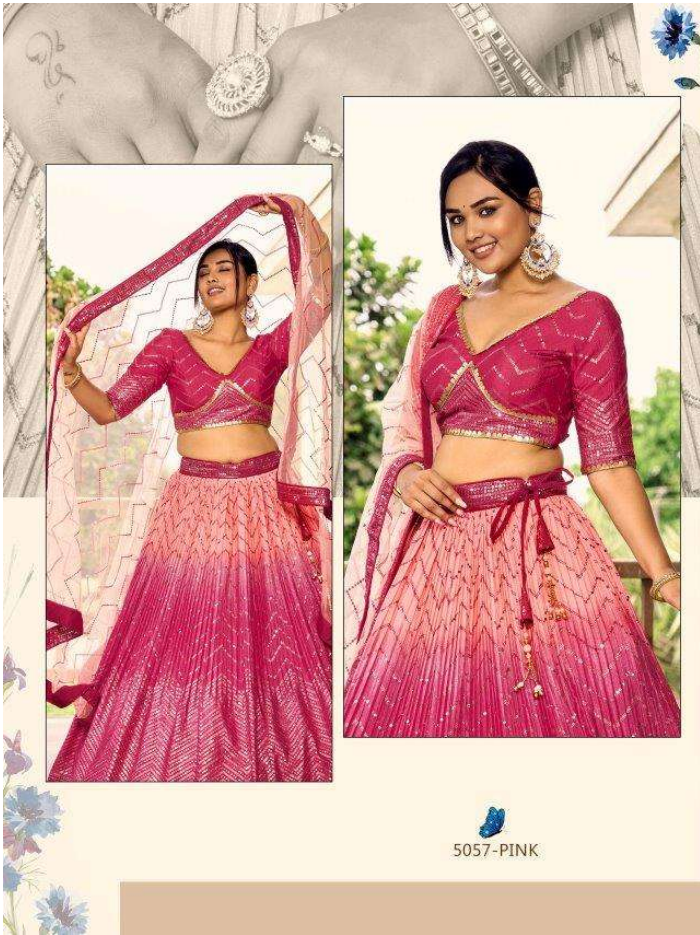
 5057-GREEN





5057-YELLOW

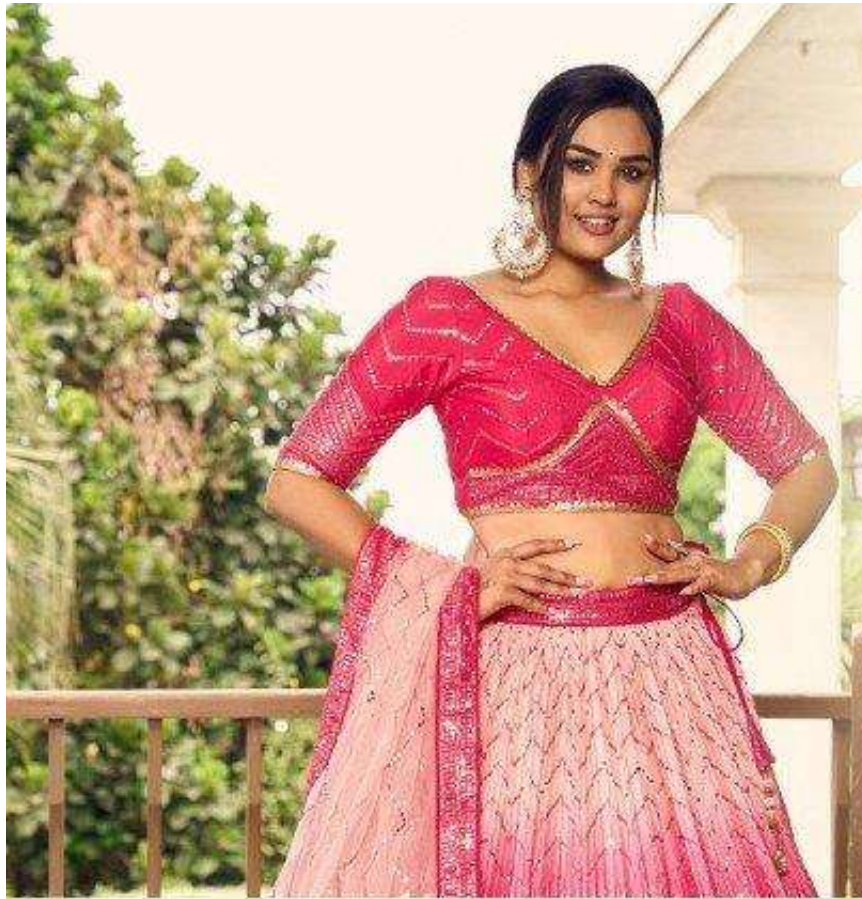








# KIMAYA



## KIMAYA / ZEEL CLOTHING

SKU/CODE	MAIN COLOR	BLOUSE FABRIC	LEHENGA FABRIC	DUPATTA FABRIC	BLOUSE SIZE (UNSTITCHED)	LEHENGA SIZE (SEMI-STITCHED)	WORK TYPE	PRICE (EXCLUDING GST (12%) AND SHIPPING )
5057-BLACK	BLACK	CHINON	CHINON	SOFT NET	BLOUSE UP TO 42 (UNSTITCHED)	LEHENGA WAIST AND LENGTH UP TO 42	Sequins, Thread Embroidery Work	2500/- (FLAT)
5057-BLUE	BLUE	CHINON	CHINON	SOFT NET	BLOUSE UP TO 42 (UNSTITCHED)	LEHENGA WAIST AND LENGTH UP TO 42	Sequins, Thread Embroidery Work	2500/- (FLAT)
5057-GREEN	GREEN	CHINON	CHINON	SOFT NET	BLOUSE UP TO 42 (UNSTITCHED)	LEHENGA WAIST AND LENGTH UP TO 43	Sequins, Thread Embroidery Work	2500/- (FLAT)
5057-PINK	PINK	CHINON	CHINON	SOFT NET	BLOUSE UP TO 42 (UNSTITCHED)	LEHENGA WAIST AND LENGTH UP TO 44	Sequins, Thread Embroidery Work	2500/- (FLAT)
5057-PURPLE	PURPLE	CHINON	CHINON	SOFT NET	BLOUSE UP TO 42 (UNSTITCHED)	LEHENGA WAIST AND LENGTH UP TO 42	Sequins, Thread Embroidery Work	2500/- (FLAT)
5057-YELLOW	YELLOW	CHINON	CHINON	SOFT NET	BLOUSE UP TO 42 (UNSTITCHED)	LEHENGA WAIST AND LENGTH UP TO 42	Sequins, Thread Embroidery Work	2500/- (FLAT)

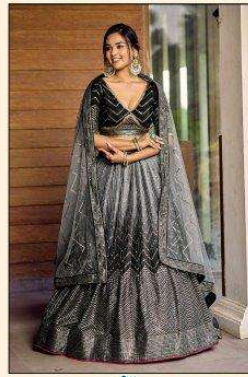
**TOTAL DESIGNS : 6 PCS / TOTAL AMOUNT RS : 15000/- / AVERAGE RATE : 2500**

ALL RATES FLAT ARE NO DISCOUNT AND EXCLUDING OF GST (12%) AND AND SHIPPING





5057-BLUE



5057-BLACK



5057-PURPLE



5057-GREEN



5057-YELLOW



5057-PINK

Zeel Clothing  
Empowering Women