



**D.NO:- M -43001**

**TOP** - ORGENZA SILK WITH EMBROIDERY

**BOTTOM | INNER** - HEAVY SANTOON

**DUPPTA** - NET WITH EMBROIDERY





**D.NO:- M -43001**

**TOP** - ORGENZA SILK WITH EMBROIDERY

**BOTTOM | INNER** - HEAVY SANTOON

**DUPPTA** - NET WITH EMBROIDERY





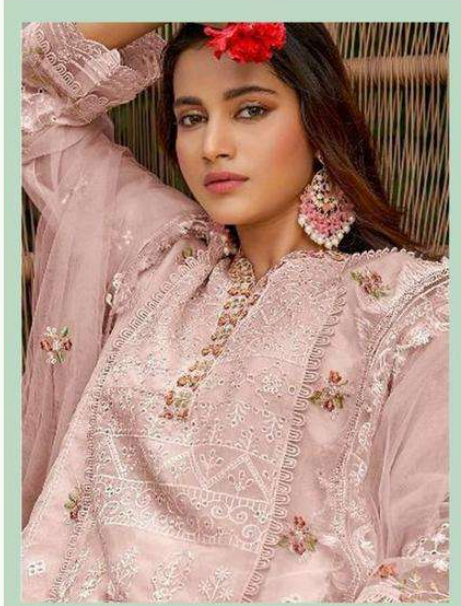
**D.NO:- M -43002**

**TOP** - ORGENZA SILK WITH EMBROIDERY

**BOTTOM | INNER** - HEAVY SANTOON

**DUPPTA** - NET WITH EMBROIDERY





**MAHNUR**  
VOL-43



D.No.43001



D.No.43002