

A woman with dark hair pulled back, wearing a red long-sleeved dress with intricate white floral embroidery. She is wearing large, ornate silver earrings and a ring. The background is a plain, light-colored wall.

**VAMIKA**  
THE FASHION STUDIO

**LAKHNAVI**

VOL.6-HIT LIST



1031-K





VAMIKA  
THE FASHION STUDIO



1031-L



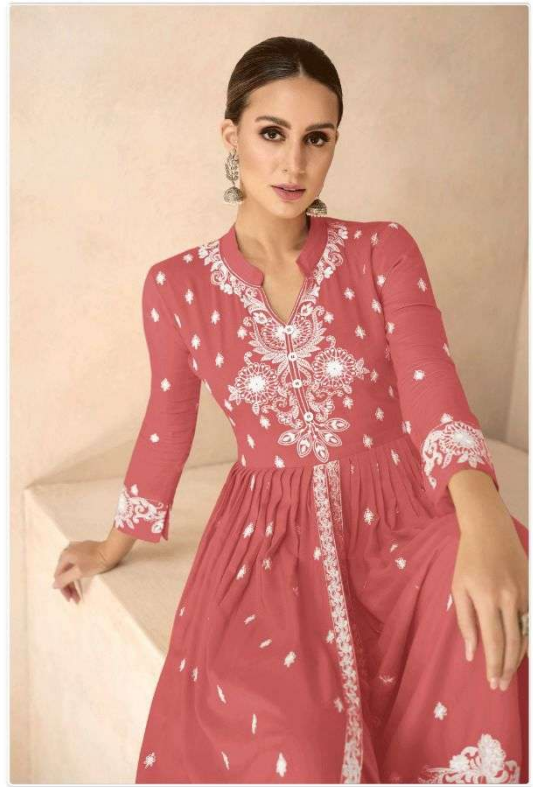


1031-M





VAMIKA  
THE FASHION STUDIO



1031-N



1031-0





1031-K



1031-L



1031-O



1031-M



1031-N

**VAMIKA**  
THE FASHION STUDIO  
**LAKHNAVI**  
VOL.6-HIT LIST