



HOOR TEX



TOP- DULL ORGANZA WITH HEAVY EMBROIDERY

OR-25-A

BOTTOM/INNER- SANTOON

DUPATTA/NET- ORGANZA WITH WORK WITH 4 SIDE CUT WORK LACE

-  DRY CLEAN ONLY.
-  DO NOT USE ANY BLEACH OR STAIN REMOVING CHEMICAL.
-  IRON THE FABRIC AT MODERATE TEMPERATURE.





HOOR TEX



TOP- DULL ORGANZA WITH HEAVY EMBROIDERY

OR-25-A

BOTTOM/INNER- SANTOON

DUPATTA/NET- ORGANZA WITH WORK WITH 4 SIDE CUT WORK LACE

- ☉ DRY CLEAN ONLY.
- ✘ DO NOT USE ANY BLEACH OR STAIN REMOVING CHEMICAL.
- ☎ IRON THE FABRIC AT MODERATE TEMPERATURE.





HOOR TEX



OR-25-B

TOP- DULL ORGANZA WITH HEAVY EMBROIDERY

BOTTOM/INNER- SANTOON

DUPATTA/NET- ORGANZA WITH WORK WITH 4 SIDE CUT WORK LACE

- ☉ DRY CLEAN ONLY.
- ☒ DO NOT USE ANY BLEACH OR STAIN REMOVING CHEMICAL.
- ☒ IRON THE FABRIC AT MODERATE TEMPERATURE.





HOOR TEX



TOP- DULL ORGANZA WITH HEAVY EMBROIDERY

OR-25-C

BOTTOM/INNER- SANTOON

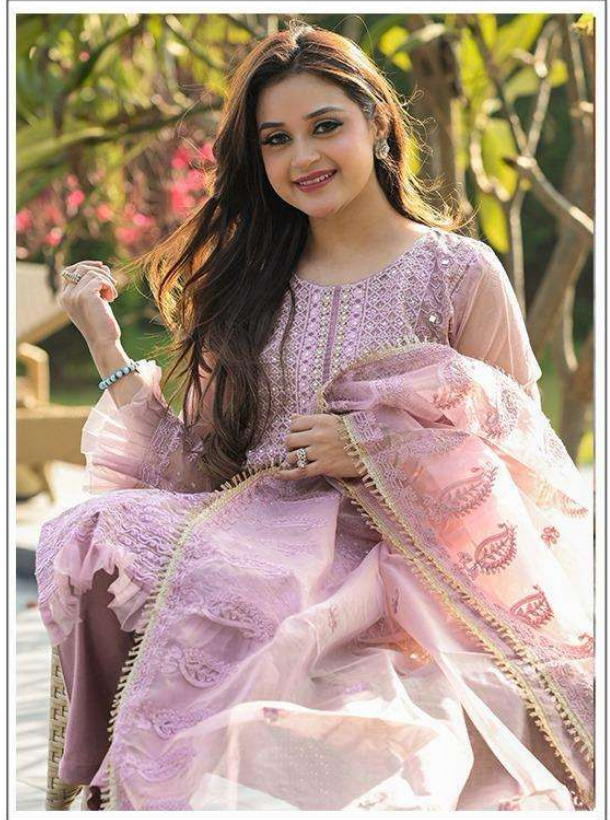
DUPATTA/NET- ORGANZA WITH WORK WITH 4 SIDE CUT WORK LACE

- ☉ DRY CLEAN ONLY.
- ✘ DO NOT USE ANY BLEACH OR STAIN REMOVING CHEMICAL.
- ☎ IRON THE FABRIC AT MODERATE TEMPERATURE.





HOOR TEX



TOP- DULL ORGANZA WITH HEAVY EMBROIDERY

OR-25-D

BOTTOM/INNER- SANTOON

DUPATTA/NET- ORGANZA WITH WORK WITH 4 SIDE CUT WORK LACE

- ☉ DRY CLEAN ONLY.
- ✘ DO NOT USE ANY BLEACH OR STAIN REMOVING CHEMICAL.
- ☎ IRON THE FABRIC AT MODERATE TEMPERATURE.



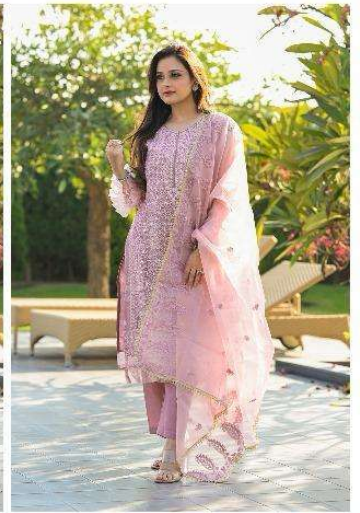
OR-25 A



OR-25 B



OR-25 C



OR-25 D


HOOR TEX