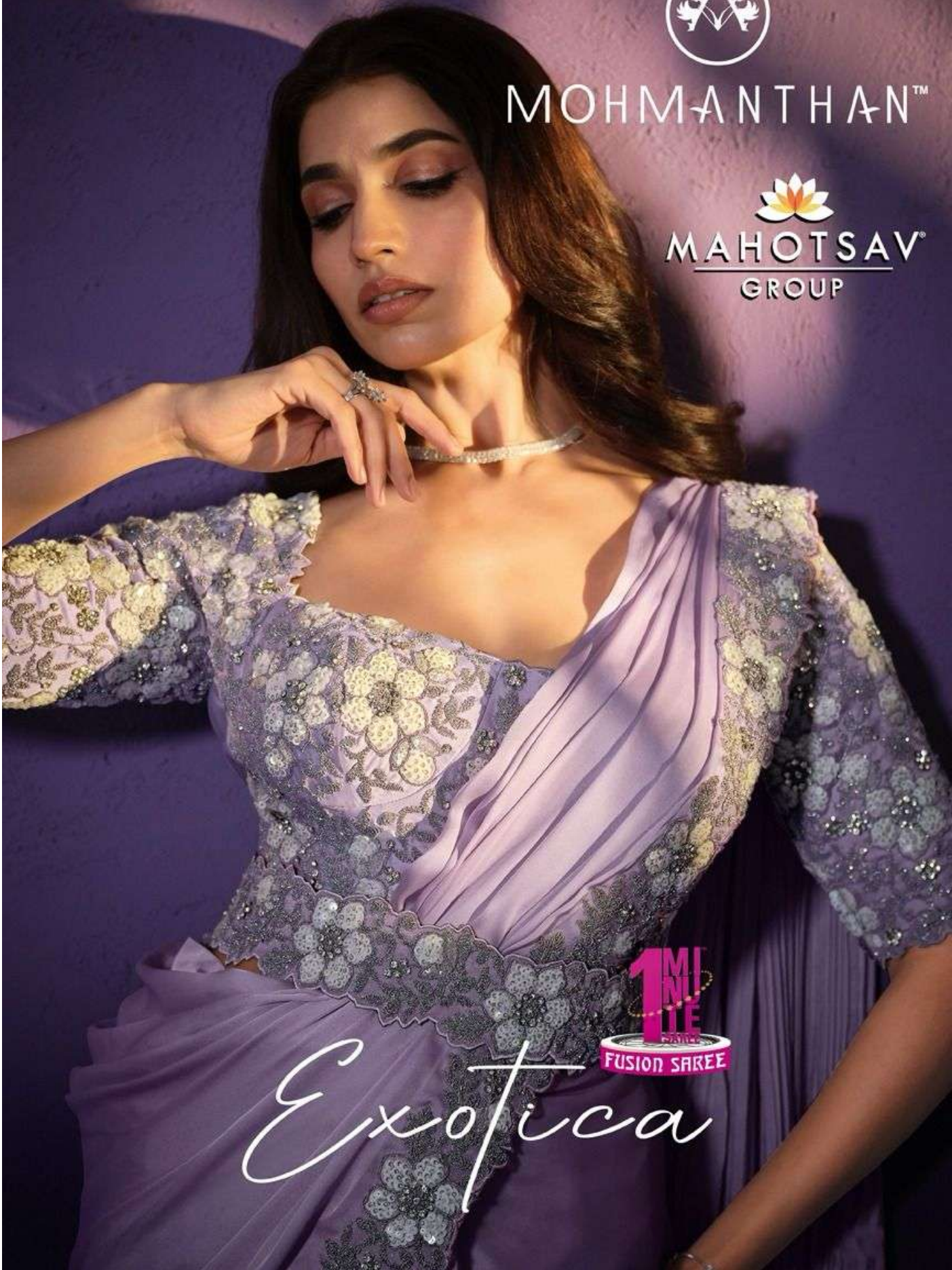




MOHMANTHAN™



MAHOTSAV®
GROUP



1
M
E
FUSION SAREE

Exotica



Embrace the bloom, where each petal embodies an exquisite grace and charm



23805
FABRIC: CREPE SATIN SILK



Sophistication
RENEWED

A timeless resurgence of sophistication and allure



23806

FABRIC: CREPE SATIN SILK

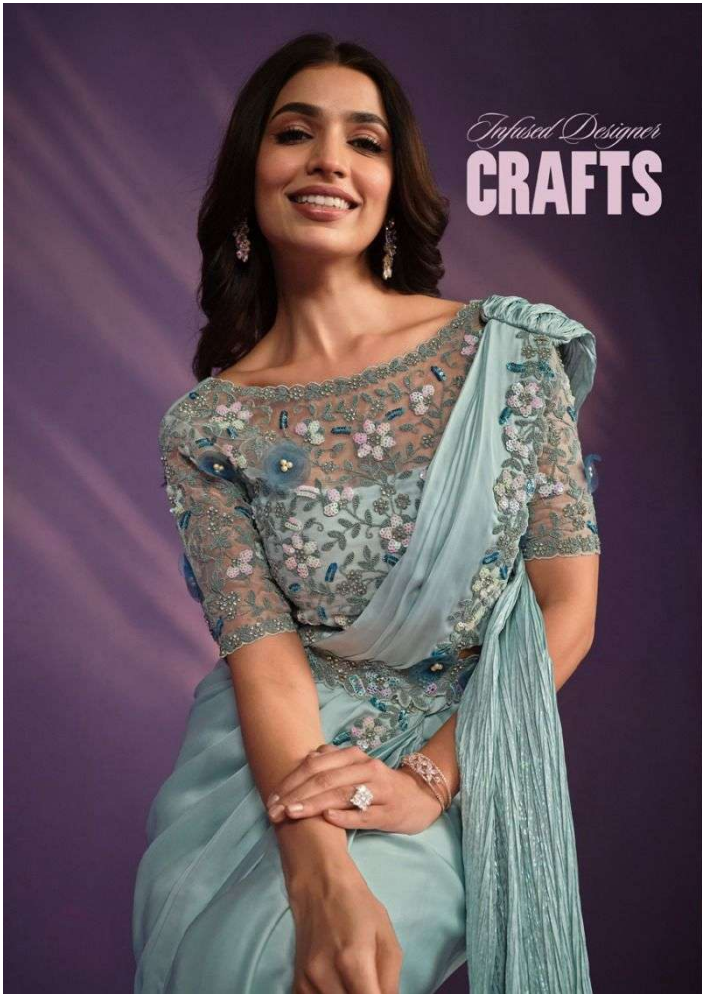
Muse
MUSE

Crafted from Crepe Silk, effortlessly fusing tradition with contemporary allure



23808

FABRIC: CREPE SATIN SILK



When tradition meets Innovation in every stitch of woven designs



Essence with
AESTHETICS
Capturing Essence: Aesthetic Symmetry in Every Thread

23810
FABRIC: CREPE SATIN SILK



Revealing the
TRENDS

A Fashion Odyssey into the Pulse of Contemporary trends



23811

FABRIC: CREPE SATIN SILK



23812

FABRIC: CREPE SATIN SILK

Fabrics
VARIANTS

Exploring a Spectrum of brilliant colours with contemporary flair

Femme Fatale
FUSION



A Femme Fatale's journey through irresistible style dynamics



23813

FABRIC: CREPE SATIN SILK

Sculpted
SILHOUETTE

Find the definition of a Masterpiece in Motion



Gold Blooms
BALLAD

A peck of floral harmony where elegance seeps with colours



23815
FABRIC: CREPE SATIN SILK

Opulent Satin
LUXURIANCE



A luxurious affair of opulence, design, and desired splendor



23816

FABRIC: CREPE SATIN SILK



Shakti Sequin
SPECTACLE



Illuminating style with a spectacle of shimmering elegance



23818

FABRIC: CREPE GEORGETTE SILK



Sublime
MERLOT MOOD

Sublime hues set the mood for an expression with style.



23819
FABRIC: PATTERN GEORGETTE



23805

23806

23807

23808

23809



23815

23816

23817

23818

23819



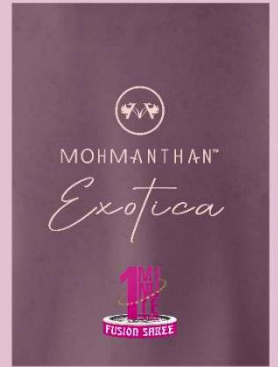
23810

23811

23812

23813

23814



CODE	SAREE [READY TO WEAR]	BLOUSE	BLOUSE [SIZE]	WEIGHT (IN KG)	COMPANY RATE
23805	Crape Satin Silk Sequins Thraed Embroidery With Stone Work	Satin	M-38 Inch With Margin Of 42 Inch	2	3995
23806	Crape Satin Silk Sequins Thread Embroidery With Stone Work [With Belt]	Organza Silk	M-38 Inch With Margin Of 42 Inch	2	3925
23807	Crape Silk Sequins Thraed Embroidery With Stone Work [Jacket With Belt]	Crape Silk	M-38 Inch With Margin Of 42 Inch	2	4205
23808	Crape Satin Silk Sequins Thraed Embroidery With Stone Work [With Belt]	Georgette	M-38 Inch With Margin Of 42 Inch	2	2975
23809	Crape Satin Silk Sequins Thraed Embroidery With Stone Work [With Belt]	Organza Silk	M-38 Inch With Margin Of 42 Inch	2	3955
23810	Crape Satin Silk Sequins Thraed Embroidery With Stone Work [With Belt]	Organza Silk	M-38 Inch With Margin Of 42 Inch	2	3785
23811	Crape Satin Silk Sequins Thraed Embroidery With Stone Work [With Belt]	Crape Satin Silk	M-38 Inch With Margin Of 42 Inch	2	3495
23812	Crape Satin Silk Sequins Thraed Embroidery With Stone Work [With Belt]	Satin Silk	M-38 Inch With Margin Of 42 Inch	2	3885
23813	Crape Satin Silk Sequins Thraed Embroidery With Stone Work [With Belt]	Crape Satin Silk	M-38 Inch With Margin Of 42 Inch	2	3155
23814	Crape Satin Silk Sequins Thraed Embroidery With Stone Work [With Belt]	Taffeta	M-38 Inch With Margin Of 42 Inch	2	3845
23815	Crape Satin Silk Sequins Thraed Embroidery With Stone Work [With Belt]	Malai Satin	M-38 Inch With Margin Of 42 Inch	2	3885
23816	Crape Satin Silk Sequins Thraed Embroidery With Stone Work [With Belt]	Organza Silk	M-38 Inch With Margin Of 42 Inch	2	4205
23817	Crape Satin Silk Sequins Thraed Embroidery With Stone Work [With Belt]	Organza Silk	M-38 Inch With Margin Of 42 Inch	2	4085
23818	Crape Georgette Silk Sequins Thraed Embroidery With Stone Work [With Belt]	Taffeta	M-38 Inch With Margin Of 42 Inch	2	3885
23819	Georgette Sequins Thraed Embroidery With Stone Work [With Belt]	Malai Satin	M-38 Inch With Margin Of 42 Inch	2	3325
TOTAL					56605