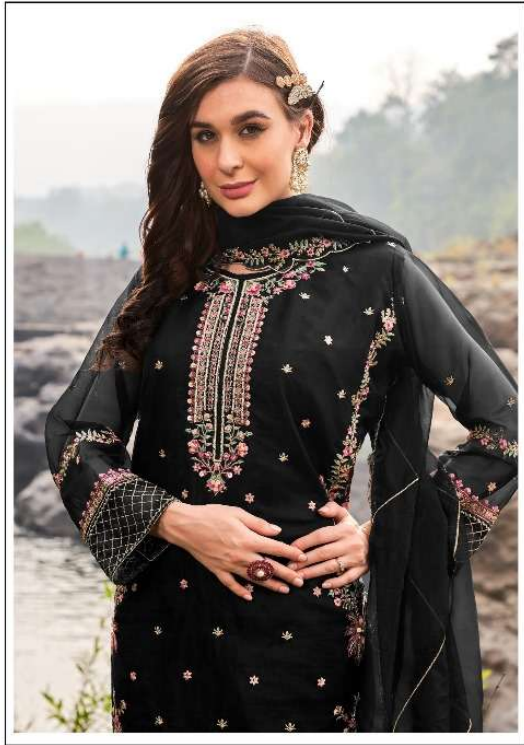


M
MUSHQ



www.mushq.com
MUSHQ
MUSHQ



M-300 A



FEBRIC DETAIL

TOP:- PURE DULL ORGANZA EMBROIDERED WORK WITH MOTI WORK

BOTTOMINNER:- SANTOON

DUPATTA:- PURE ORGANZA WITH EMBROIDERED WORK WITH CUT WORK

☉ DRY CLEAN ONLY.
✘ DO NOT USE ANY BLEACH OR STAIN REMOVING CHEMICAL.
☼ IRON THE FABRIC AT MODERATE TEMPERATURE.





M-300 B



FEBRIC DETAIL

TOP:- PURE DULL ORGANZA EMBROIDERED WORK WITH MOTI WORK

BOTTOMINNER:- SANTOON

DUPATTA:- PURE ORGANZA WITH EMBROIDERED WORK WITH CUT WORK

☉ DRY CLEAN ONLY.
✘ DO NOT USE ANY BLEACH OR STAIN REMOVING CHEMICAL.
☼ IRON THE FABRIC AT MODERATE TEMPERATURE.





M-300 C



FEBRIC DETAIL

TOP:- PURE DULL ORGANZA EMBROIDERED WORK WITH MOTI WORK

BOTTOMINNER:- SANTOON

DUPATTA:- PURE ORGANZA WITH EMBROIDERED WORK WITH CUT WORK

☉ DRY CLEAN ONLY.
✘ DO NOT USE ANY BLEACH OR STAIN REMOVING CHEMICAL.
☼ IRON THE FABRIC AT MODERATE TEMPERATURE.



M
MUSHQ





M-300 D



FEBRIC DETAIL

TOP:- PURE DULL ORGANZA EMBROIDERED WORK WITH MOTI WORK

BOTTOMINNER:- SANTOON

DUPATTA:- PURE ORGANZA WITH EMBROIDERED WORK WITH CUT WORK

☉ DRY CLEAN ONLY.
✘ DO NOT USE ANY BLEACH OR STAIN REMOVING CHEMICAL.
☼ IRON THE FABRIC AT MODERATE TEMPERATURE.





TOP:- PURE DULL ORGANZA EMBROIDERED WORK
WITH MOTI WORK
BOTTOMINNER:- SANTOON
DUPATTA:- PURE ORGANZA WITH EMBROIDERED WORK
WITH CUT WORK



M-300 A



M-300 B



M-300 C



M-300 D