



SF817-A

Fabric:

- Embroidered georgette front with sequins work
- Embroidered georgette sleeves
- Embroidered tissue sleeves lace
- Embroidered tissue ghera lace
- Embroidered chiffon dupatta
- dull santoon trouser
- Embroidered tissue trouser lace.






SAPA
 CREATION

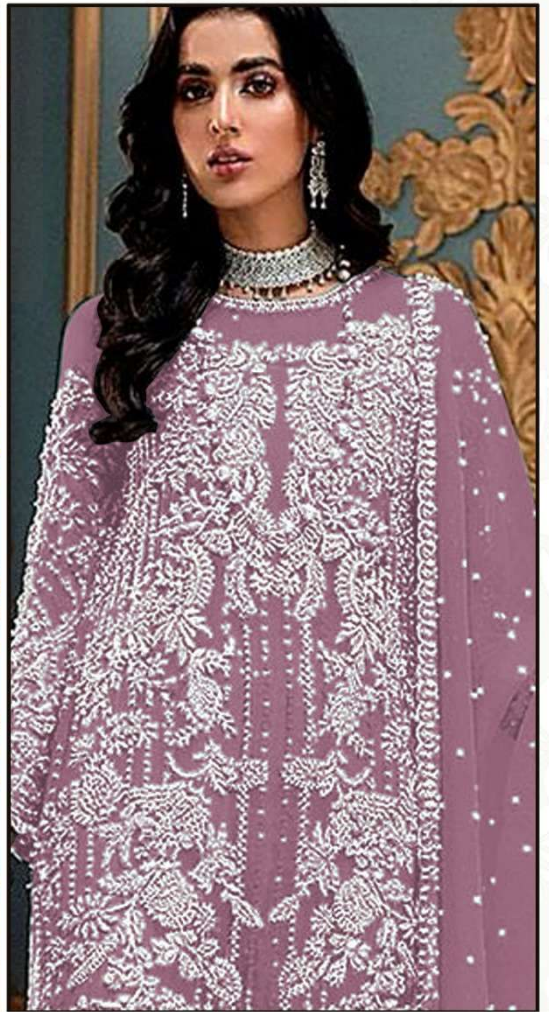


SF817-A

Fabric:

- Embroidered georgette front with sequins work
- Embroidered georgette sleeves
- Embroidered tissue sleeves lace
- Embroidered tissue ghera lace
- Embroidered chiffon dupatta
- dull santoon trouser
- Embroidered tissue trouser lace.






S A F A
 CREATION

SF817-B

Fabric:

- Embroidered georgette front with sequins work
- Embroidered georgette sleeves
- Embroidered tissue sleeves lace
- Embroidered tissue ghera lace
- Embroidered chiffon dupatta
- dull santoon trouser
- Embroidered tissue trouser lace.






S A F A
 CREATION

SF817-C

Fabric:

- Embroidered georgette front with sequins work
- Embroidered georgette sleeves
- Embroidered tissue sleeves lace
- Embroidered tissue ghera lace
- Embroidered chiffon dupatta
- dull santoon trouser
- Embroidered tissue trouser lace.





SF817-D

Fabric:

- Embroidered georgette front with sequins work
- Embroidered georgette sleeves
- Embroidered tissue sleeves lace
- Embroidered tissue ghera lace
- Embroidered chiffon dupatta
- dull santoon trouser
- Embroidered tissue trouser lace.





Fabric:
Embroidered georgette front with sequins work
Embroidered georgette sleeves
Embroidered tissue sleeves lace
Embroidered tissue ghera lace
Embroidered chiffon dupatta
dull santoon trouser
Embroidered tissue trouser lace.



SF817-A



SF817-B



SF817-C



SF817-D