









SIGNATURE-050

TOP

Faux georjott With
Embroidery

BOTTOM-INNER

Dull Santoon

DUPATTA

Butterfly net



Fabrics Details

TOP: Georgette with embroidery

BOTTOM: **Santoon**

DUPATTA: **Butterfly net with embroidery**

Care Instructions

Code:-742



- >Dry clean recommended
- >Do not use anytype of bleach or stain removing chemicals.
- > Do not overexpose damp fabrics to strong sunlight.
- >Iron at moderate temperature.



SIFONA®



WASHING INTRUCTIONS

DO NOT USE ANY TYPE OF BLEACH OR STAIN REMOVING CHEMICALS
BEFORE CUTTING / STITCHING, FABRIC SHOULD BE SOAKED BE SOAKED IN WATER
(ALL COMPONENTS SEPARATELY) FOR 15 MINUTES
DO NOT KEEP WET FABRIC IN TWISTED FROM IN ORDER TO AVOID COPY MARKS |
WASH COLOURED AND WHITE FABRICS SEPARATELY
IRON CLOTHES AT MODERATE TEMPERATURE | DO NOT DRY FABRIC IN DIRECT SUNLIGHT
(EXTRA LACES, HANGINGS AND ACCESSORIES ARE NOT INDUDED)

D.NO.7002





RA

WASHING INSTRUCTIONS

DO NOT USE ANY TYPE OF BLEACH OR STAIN REMOVING CHEMICALS
BEFORE CUTTING / SEWING, FABRIC SHOULD BE SOAKED IN WATER
(ALL COMPONENTS SEPARATELY) FOR 15 MINUTES
DO NOT IRON WET FABRIC. REMOVE FROM IRONER TO PRESS (FOR BODICE)
WASH COLOURED AND WHITE FABRICS SEPARATELY
IRON CLOTHES AT MODERATE TEMPERATURE (DO NOT IRON FABRIC IN DIRECT SUNLIGHT)
(EXTRA LACES, HANGING AND ACCESSORIES ARE NOT INCLUDED)



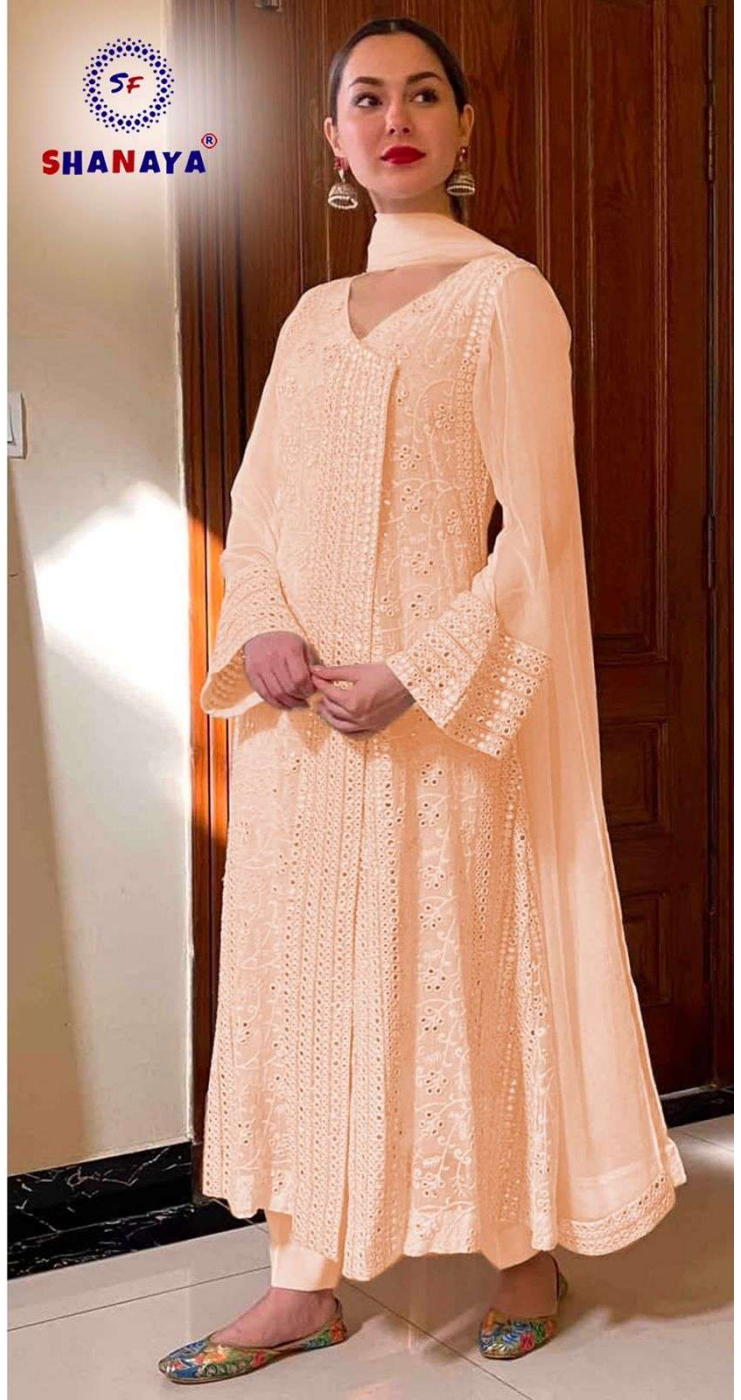
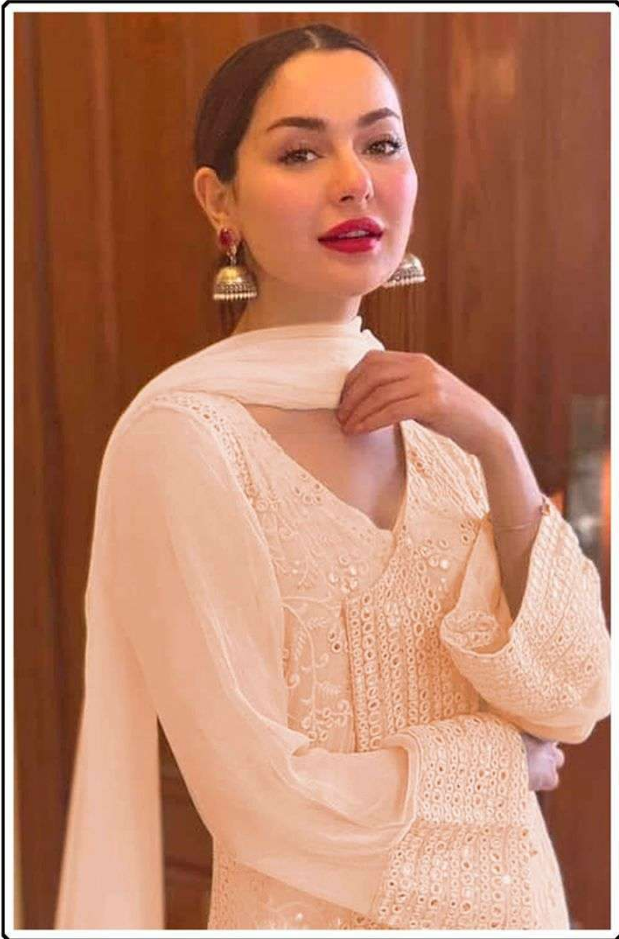
RiazTM
ART

D.No.73-C

TOP
FOX GEORGETTE

BOTTOM-INNER
SANTOON

DUPATTA
NET DUPATTA



SF
SHANAYA®



S-93

Rose
AYNOOR



WASHING INSTRUCTIONS

DO NOT USE ANY TYPE OF BLEACH OR STAIN REMOVING CHEMICALS
BEFORE CUTTING / STITCHING , FABRIC SHOULD BE SOAKED IN WATER
(ALL COMPONENTS SEPARATELY) FOR 15 MINUTES
DO NOT KEEP WET FABRIC IN TWISTED FORM IN ORDER TO AVOID COPY MARKS |
WASH COLOURED AND WHITE FABRICS SEPARATELY
IRON CLOTHES AT MODERATE TEMPERATURE | DO NOT DRY FABRIC IN DIRECT SUNLIGHT
(EXTRA LACES, HANGINGS AND ACCESSORIES ARE NOT INCLUDED)

u

QALAMKAR

LUXURY FORMALS'20

ZH
ZAURA-HASSAN



1208

TOP - BUTTERFLY NET WITH HEAVY EMBROIDERY

BOTTOM - DULL SANTOON

DUPATTA - NET WITH HEAVY EMBROIDERY



ELAFTM
NURÉH

**HEAVY EMBROIDERED
COLLECTION**

FABRIC DETAILS

**TOP: HEAVY BUTTERFLY NET WITH
HEAVY EMBROIDERY SEQUENCE PATCH WORK
WITH MACHINE CUT WORK**

**BOTTOM : HEAVY SANTOON WITH
EMBROIDERY SEQUENCE PATCH WORK
WITH MACHINE CUT WORK**

INNER : HEAVY SANTOON

**DUPATTA: HEAVY BUTTERFLY NET DUPATTA WITH
EMBROIDERY WORK**

G.NO.129





Emb. Sleeves

Emb Net Dupatta

Emb Front

Bottom

Patch













WASHING INSTRUCTIONS

DO NOT USE ANY TYPE OF BLEACH OR STAIN REMOVING CHEMICALS
BEFORE CUTTING / STITCHING , FABRIC SHOULD BE SOAKED IN WATER
(ALL COMPONENTS SEPARATELY) FOR 15 MINUTES
DO NOT KEEP WET FABRIC IN TWISTED FROM IN ORDER TO AVOID COPY MARKS |
WASH COLOURED AND WHITE FABRICS SEPARATELY
IRON CLOTHES AT MODERATE TEMPERATURE | DO NOT DRY FABRIC IN DIRECT SUNLIGHT
(EXTRA LACES, HANGINGS AND ACCESSORIES ARE NOT INLUDED)

Aayara - 28





Emb Sleeves

Emb Front

Net Fancy
Dupatta

Bottom

Patch



Aaryara - 28

RINAZ[®]
FASHION
D.No.1188



TOP - NET WITH HEAVY EMBROIDERY & DIAMOND WORK
BOTTOM + INNER - NET WITH EMBROIDERY & SHANTUN
DUPATTA - NET WITH EMBROIDERY



Fabrics Details

TOP: Georgette with embroidery

BOTTOM: Santoon

DUPATTA: Butterfly net with embroidery

Care Instructions

Code:-823



MACHINE WASH DO NOT BLEACH IRONING IRON LINE DRY

- >Dry clean recommended
- >Do not use anytype of bleach or stain removing chemicals.
- > Do not overexpose damp fabrics to strong sunlight.
- >Iron at moderate temperature.





Care Instructions

Code:-751-B



MACHINE WASH DO NOT BLEACH MEDIUM IRON LINE DRY

- >Dry clean recommended
- >Do not use anytype of bleach or stain removing chemicals.
- > Do not overexpose damp fabrics to strong sunlight.
- >Iron at moderate temperature.



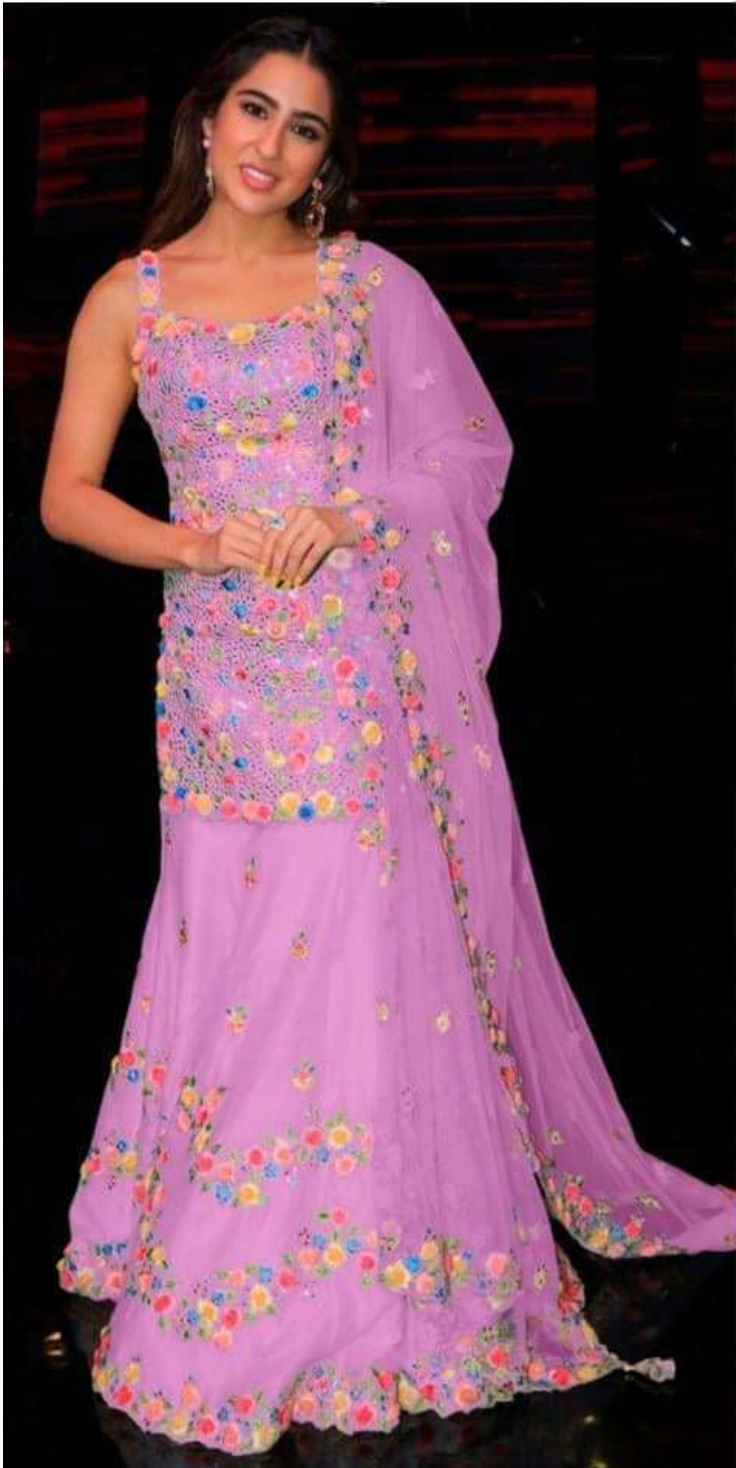
Care Instructions

Code:-751-C



MACHINE WASH DO NOT BLEACH MEDIUM IRON LINE DRY

- >Dry clean recommended
- >Do not use anytype of bleach or stain removing chemicals.
- > Do not overexpose damp fabrics to strong sunlight.
- >Iron at moderate temperature.



Care Instructions

Code:-751-D



MACHINE WASH DO NOT BLEACH NO IRON LINE DRY

- >Dry clean recommended
- >Do not use anytype of bleach or stain removing chemicals.
- > Do not overexpose damp fabrics to strong sunlight.
- >Iron at moderate temperature.

Bareezé™
Embroidered Classics
D.NO.1005 D



TOP :- FOX GEORGETTE
DUPATTA:- NET
BOTTOM/INNER :- SANTOON

Bareezé[™]

Embroidered Classics

D.NO.1005 B



TOP :- FOX GEORGETTE
DUPATTA:- NET
BOTTOM/INNER :- SANTOON

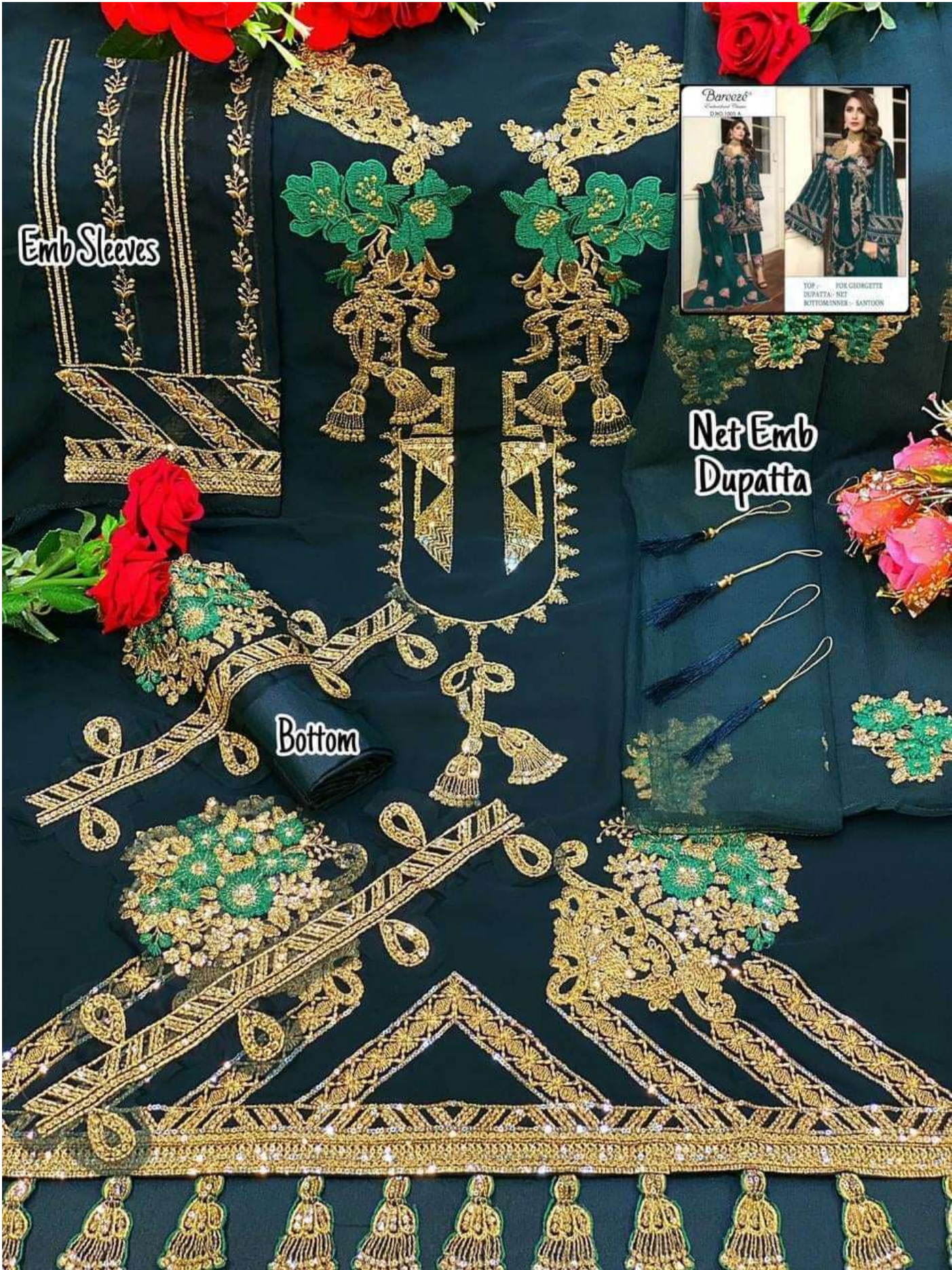
Bareezé™

Embroidered Classics

D.NO.1005 A



TOP :- FOX GEORGETTE
DUPATTA:- NET
BOTTOM/INNER :- SANTOON

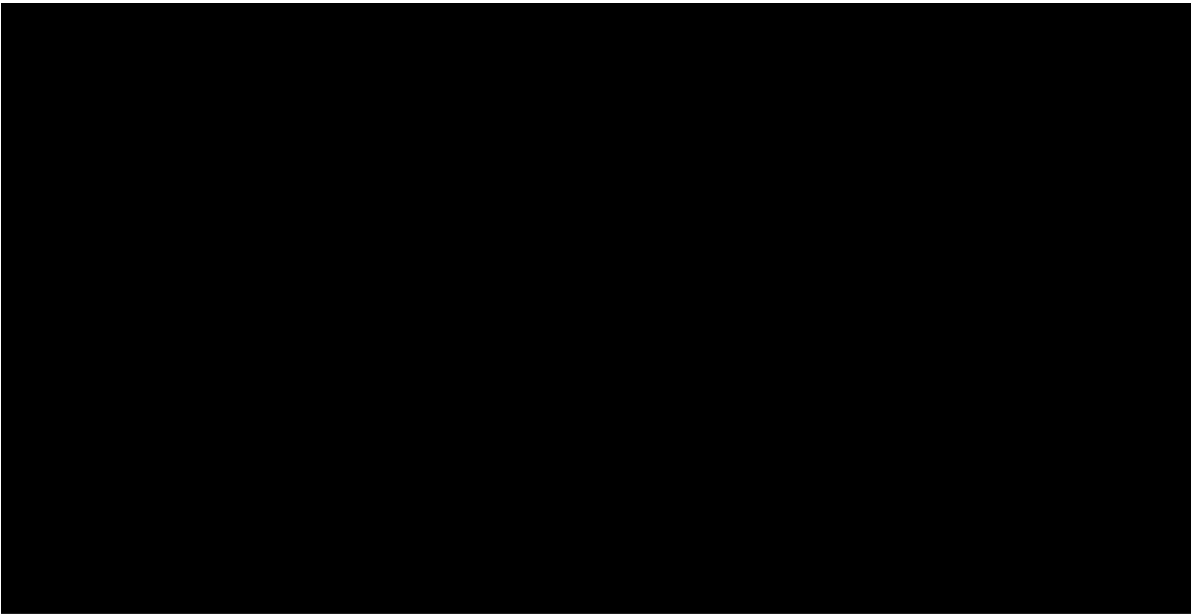


Emb Sleeves



Net Emb Dupatta

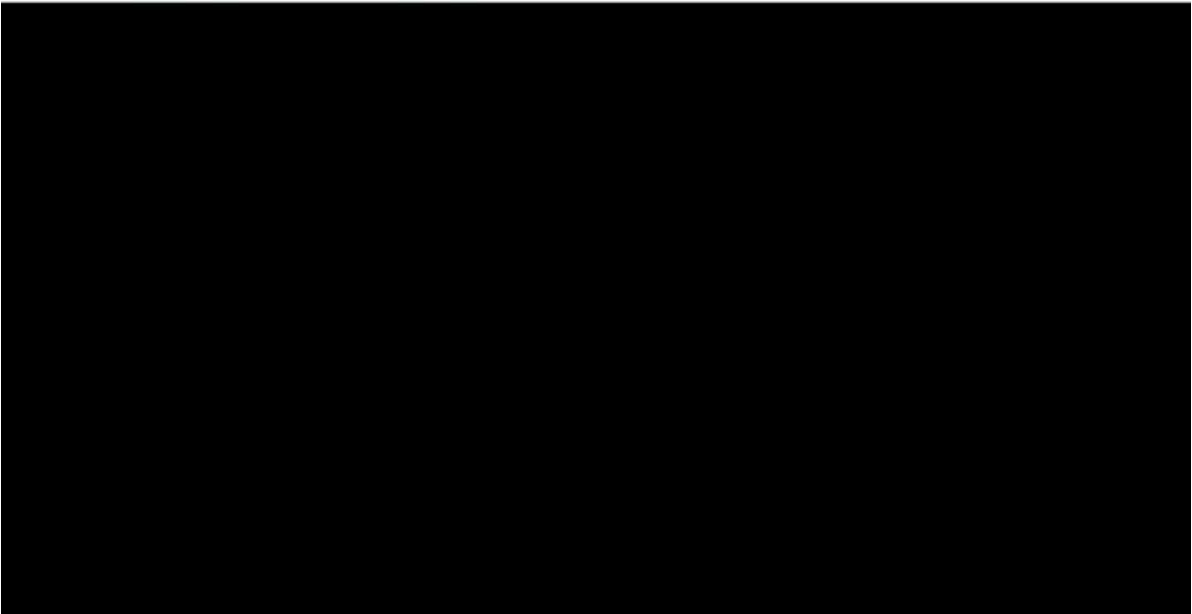
Bottom



GUL AHMED-2



TOP :- FOX JORJET WITH HEAVY EMBROIDERY
TDUPATTA :- NAZNIN WITH HEAVY EMBROIDERY AND PATCH
BOTTOM INNER :- SANTOON





WASHING INSTRUCTIONS

DO NOT USE ANY TYPE OF BLEACH OR STAIN REMOVING CHEMICALS
BEFORE CUTTING / STITCHING. FABRIC SHOULD BE SOAKED IN WATER
(ALL COMPONENTS SEPARATELY) FOR 15 MINUTES
DO NOT KEEP WET FABRIC IN TWISTED FORM IN ORDER TO AVOID COPY MARKS
WASH COLOURED AND WHITE FABRICS SEPARATELY
IRON CLOTHES AT MODERATE TEMPERATURE | DO NOT DRY FABRIC IN DIRECT SUNLIGHT
(EXTRA LACES, HANGINGS AND ACCESSORIES ARE NOT INCLUDED)

5001

