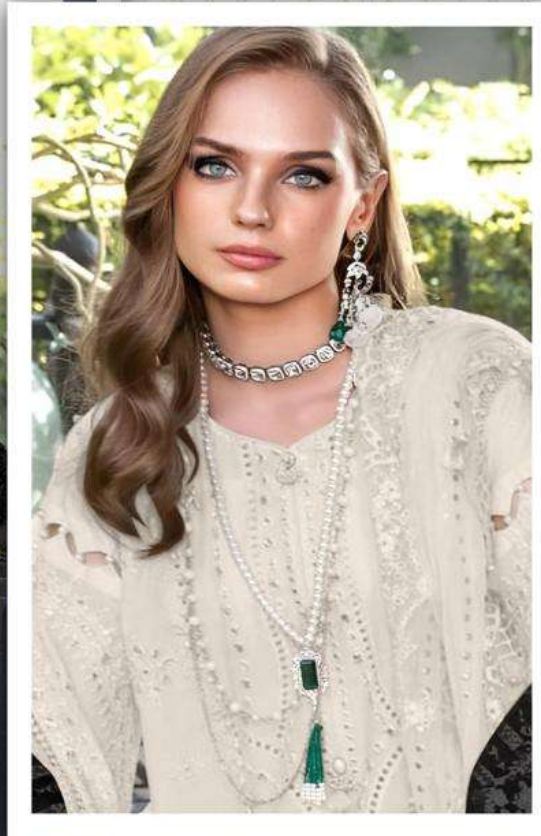


### SF811-A

Fabric:  
Embroidered georgette front with sequins work  
Embroidered georgette sleeves  
Embroidered tissue sleeves lace  
Embroidered tissue ghera lace  
Embroidered Heavy fox dupatta  
Heavy santoon trouser







### SF811-A

Fabric:  
Embroidered georgette front with sequins work  
Embroidered georgette sleeves  
Embroidered tissue sleeves lace  
Embroidered tissue ghera lace  
Embroidered Heavy fox dupatta  
Heavy santoon trouser

- Iron 30°
- Don't bleach
- Don't dry in the dryer
- Don't dry clean
- Steam iron
- Don't press out





### SF811-B

Fabric:  
Embroidered georgette front with sequins work  
Embroidered georgette sleeves  
Embroidered tissue sleeves lace  
Embroidered tissue ghera lace  
Embroidered Heavy fox dupatta  
Heavy santoon trouser







### SF811-C

Fabric:  
Embroidered georgette front with sequins work  
Embroidered georgette sleeves  
Embroidered tissue sleeves lace  
Embroidered tissue ghera lace  
Embroidered Heavy fox dupatta  
Heavy santoon trouser







### SF811-D

Fabric:  
Embroidered georgette front with sequins work  
Embroidered georgette sleeves  
Embroidered tissue sleeves lace  
Embroidered tissue ghera lace  
Embroidered Heavy fox dupatta  
Heavy santoon trouser







### SF811-E

Fabric:  
Embroidered georgette front with sequins work  
Embroidered georgette sleeves  
Embroidered tissue sleeves lace  
Embroidered tissue ghera lace  
Embroidered Heavy fox dupatta  
Heavy santoon trouser







SF811-F

Fabric:  
Embroidered georgette front with sequins work  
Embroidered georgette sleeves  
Embroidered tissue sleeves lace  
Embroidered tissue ghera lace  
Embroidered Heavy fox dupatta  
Heavy santoon trouser







SF811-G

Fabric:  
Embroidered georgette front  
with sequins work  
Embroider georgette sleeves  
Embroidered tissue sleeves lace  
Embroidered tissue ghera lace  
Embroidered Heavy fox dupatta  
Heavy santoon trouser



Handwash  
only



don't bleach



don't dry in  
the dryer



don't dry clean



don't iron



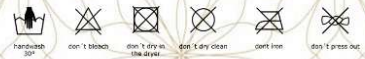
don't press out





SF811-H

Fabric:  
 Embroidered georgette front with sequins work  
 Embroidered georgette sleeves  
 Embroidered tissue sleeves lace  
 Embroidered tissue ghera lace  
 Embroidered Heavy fox dupatta  
 Heavy santoon trouser







SF811-I

Fabric:  
Embroidered georgette front  
with sequins work  
Embroider georgette sleeves  
Embroidered tissue sleeves lace  
Embroidered tissue ghera lace  
Embroidered Heavy fox dupatta  
Heavy santoon trouser



Handwash  
only



don't bleach



don't iron  
(the dress)



don't dry clean



don't steam iron



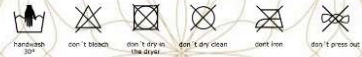
don't press out





SF811-J

Fabric:  
 Embroidered georgette front with sequins work  
 Embroidered georgette sleeves  
 Embroidered tissue sleeves lace  
 Embroidered tissue ghera lace  
 Embroidered Heavy fox dupatta  
 Heavy santoon trouser

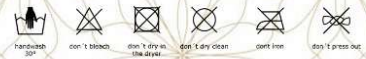






SF811-K

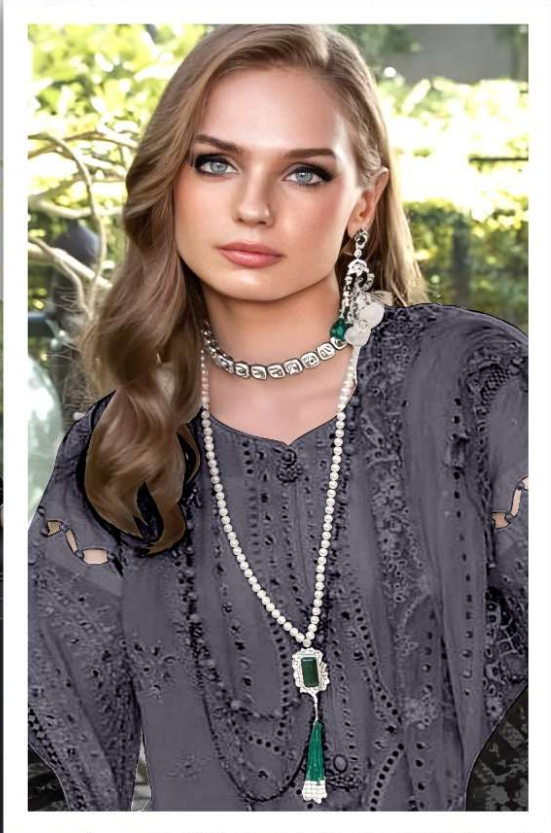
Fabric:  
Embroidered georgette front  
with sequins work  
Embroider georgette sleeves  
Embroidered tissue sleeves lace  
Embroidered tissue ghera lace  
Embroidered Heavy fox dupatta  
Heavy santoon trouser







**SAFA**  
CREATION



**SF811-L**

Fabric:  
Embroidered georgette front  
with sequins work  
Embroider georgette sleeves  
Embroidered tissue sleeves lace  
Embroidered tissue ghera lace  
Embroidered Heavy fox dupatta  
Heavy santoon trouser



Handwash  
only



don't bleach



don't dry clean

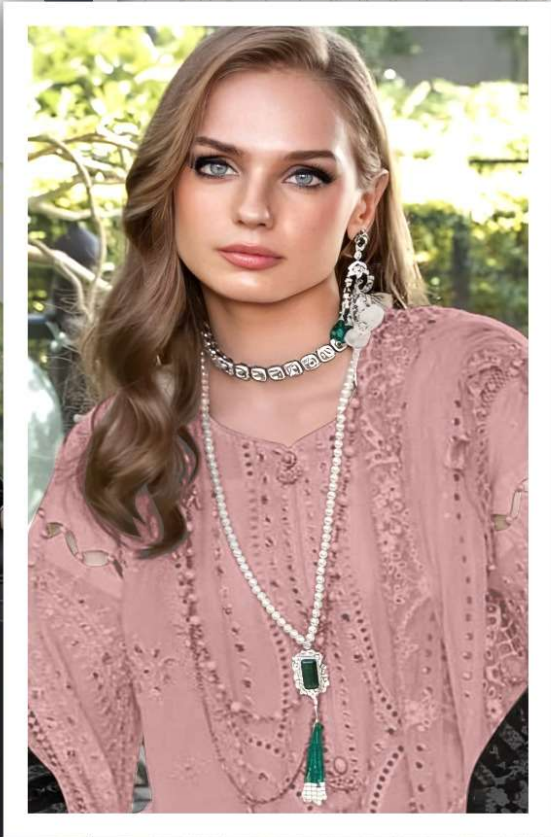


don't iron



don't press out





### SF811-M

Fabric:  
 Embroidered georgette front with sequins work  
 Embroidered georgette sleeves  
 Embroidered tissue sleeves lace  
 Embroidered tissue ghera lace  
 Embroidered Heavy fox dupatta  
 Heavy santoon trouser

