




SAFA
 CREATION



SF812- A

Fabric:
 Embroidered georgette front with sequins work
 Embroidered georgette back
 Embroidered georgette sleeves
 Embroidered tissue sleeves lace
 Embroidered tissue ghera lace
 Embroidered chiffon dupatta
 dull Santoon trouser
 Embroidered tissue trouser lace



Hand wash only with water temperature not exceeding 30°C.



Do not bleach or treat with oxidant.



Do not iron.



Do not tumble dry.



Do not dry clean.



Do not wet dry.



Dry in shade.




SAFA
 CREATION



SF812- A

Fabric:
 Embroidered georgette front with sequins work
 Embroidered georgette back
 Embroidered georgette sleeves
 Embroidered tissue sleeves lace
 Embroidered tissue ghera lace
 Embroidered chiffon dupatta
 dull Santoon trouser
 Embroidered tissue trouser lace



Hand wash only with water temperature not exceeding 30°C.



Do not bleach or treat with oxidant.



Do not iron.



Do not tumble dry.



Do not dry clean.



Do not wet dry.



Dry in shade.



SF812- B

Fabric:
 Embroidered georgette front with sequins work
 Embroidered georgette back
 Embroidered georgette sleeves
 Embroidered tissue sleeves lace
 Embroidered tissue ghera lace
 Embroidered chiffon dupatta
 dull Santoon trouser
 Embroidered tissue trouser lace



Hand wash only with water temperature not exceeding 30°C.



Do not bleach or treat with oxidant.



Do not iron.



Do not tumble dry.



Do not dry clean.



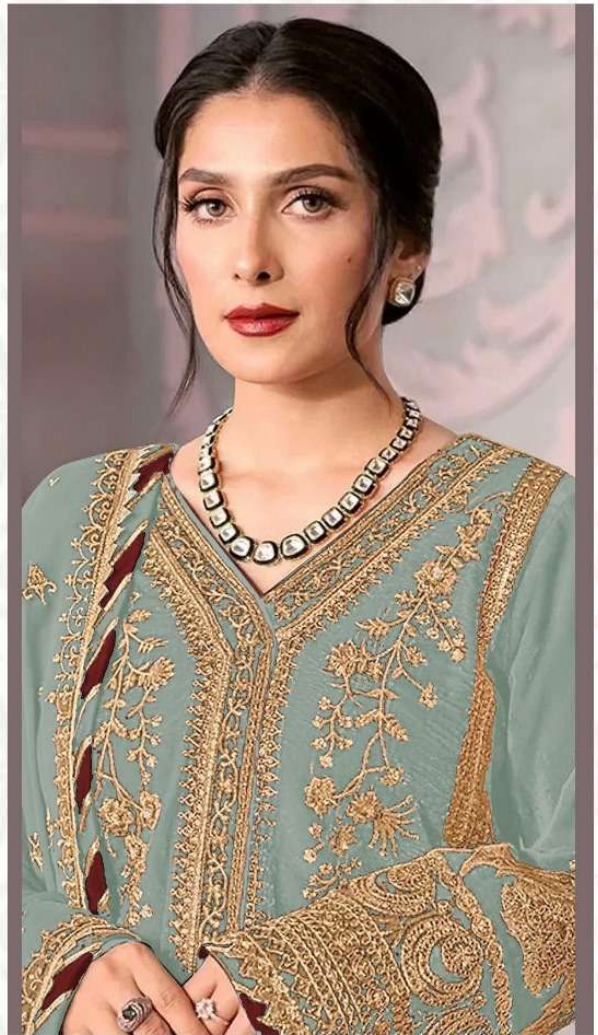
Do not wet dry.



Dry in shade.




SAFA
 CREATION



SF812- C

Fabric:
 Embroidered georgette front with sequins work
 Embroidered georgette back
 Embroidered georgette sleeves
 Embroidered tissue sleeves lace
 Embroidered tissue ghera lace
 Embroidered chiffon dupatta
 dull Santoon trouser
 Embroidered tissue trouser lace



Hand wash only with water temperature not exceeding 30°C.



Do not bleach or treat with oxidant.



Do not iron.



Do not tumble dry.



Do not dry clean.



Do not wet dry.



Dry in shade.




SAFA
 CREATION



SF812- D

Fabric:
 Embroidered georgette front with sequins work
 Embroidered georgette back
 Embroidered georgette sleeves
 Embroidered tissue sleeves lace
 Embroidered tissue ghera lace
 Embroidered chiffon dupatta
 dull Santoon trouser
 Embroidered tissue trouser lace



Hand wash only with water temperature not exceeding 30°C.



Do not bleach or treat with oxidant.



Do not iron.



Do not tumble dry.



Do not dry clean.



Do not wet dry.



Dry in shade.



Fabric:
Embroidered georgette front with sequins work
Embroidered georgette back
Embroidered georgette sleeves
Embroidered tissue sleeves lace
Embroidered tissue ghera lace
Embroidered chiffon dupatta
dull Santoon trouser
Embroidered tissue trouser lace



SF812- A



SF812- B



SF812- C



SF812- D