



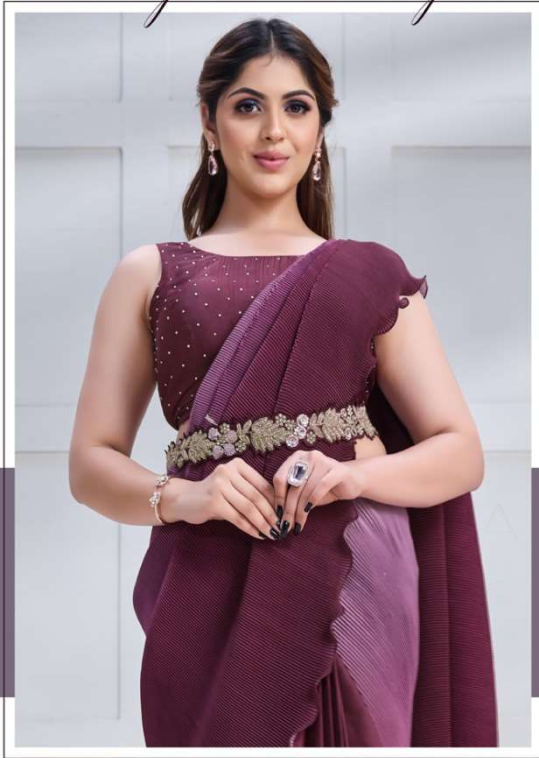
MOHMANTHAN™



MAHOTSAV  
GROUP

*Majestica*

GET WRAPPED IN  
*Majestic Beauty*



THIS  
WINE-COL-  
ORED SAREE  
WITH A HINT  
OF LIGHT  
PURPLE  
EXUDES  
GRACE AND  
CHARISMA.

FASHIONS FADE, STYLE IS ETERNAL  
23508

FABRIC: CREPE SATIN SILK



The art of capturing the soul  
in radiant crepe satin silk

With fervent vibrancy, this saree leads us on a captivating voyage.



FASHIONS FADE, STYLE IS ETERNAL  
23510

FABRIC: CREPE SATIN SILK



Elegant in its hues, this saree tells a tale of her ever-evolving beauty.



FASHIONS MADE STYLE IS ETERNAL  
23511

FABRIC: BANARASI CRUSH SILK



*Discovering majestic*  
charm in the red

Join the timeless craftsmanship and style evolution with the red.



FASHIONS FADE, STYLE IS ETERNAL  
23512

FABRIC: CREPE SILK GEORGETTE

*A Symphony in*  
Light of Palettes



NARRATE  
YOUR STYLE  
WITH CAPTI-  
VATING  
FASHION.

FASHIONS FADE, STYLE IS ETERNAL  
23513

FABRIC: CREPE SATIN SILK





Adorn yourself with a  
*testament to regal grace.*



WITHIN  
STYLE'S  
FOLDS, THE  
SAREE TELLS  
A WOMAN'S  
BEAUTY  
STORY.  
PAINTING  
CHARM.



EXCLUSIONS FADE, STYLE IS ETERNAL  
23515

FABRIC: CREPE SATIN SILK



Shining Blue



A perfect wardrobe choice, where grace meets fashion, a feminist statement.



*Your Style's Refined Melody.*



FABRIC: CREPE SATIN SILK

Be a Show Stopper  
in *Delicate Hues*



These beautiful drapes shine not just with design but also with intricate smiles.



23517

FABRIC: TUSSER SILK

*Go with the shining blue,  
a shade just made for you*



BLEND YOUR  
PERSONA FOR  
A HARMONI-  
OUS POR-  
TRAYAL OF  
INNATE  
CHARM.

FASHIONS FADE, STYLE IS ETERNAL  
23518

FABRIC: CREPE SATIN SILK



*The fervent allure of  
rich brown shades.*



Fabric and elegance fuse, leaving a lasting impression in your style.



FASHIONS MADE, STYLE IS ETERNAL  
23519

FABRIC: TWO TONE GEORGETTE SILK

**When Style Meets Impression:**  
A Beautiful Fusion.

Step into a world where style and impression fuse beauty harmoniously.



FASHIONS FADE, STYLE IS ETERNAL  
23520

FABRIC: PURE CREPE GEORGETTE





WEAVING A  
TALE OF  
ARTISTRY, A  
TOUCH OF  
OPULENCE TO  
TIMELESS  
ELEGANCE.



It's her style's  
turn to shine now

FASHIONS FADE, STYLE IS ETERNAL  
23522

FABRIC: CREPE SATIN SILK

DESIGN NO	SAREE FABRIC	BLOUSE FABRIC	Saree WORK	Belt	CUSTZ.(SEMISTITCH/UN-STITCH)	BLOUSE SIZE
23508	Crepe satin silk	Satin Silk	Texture with Cord & Sequence Embroidered and Stone work	Available	stitched Blouse	up to 38 Inch with margin of 42 inch
23510	Crepe satin silk	Banglora Silk	Applique work with Cord, Sequence Embroidered & Stone Work	NA	stitched Blouse	up to 38 Inch with margin of 42 inch
23511	Banarasi Crush silk	Malai Satin	Sequence Embroidered with Stone work	NA	stitched Blouse	up to 38 Inch with margin of 42 inch
23512	Crepe Silk Georgette	Net	Texture with Cord, Sequence Embroidered & Stone work	Available	stitched Blouse	up to 38 Inch with margin of 42 inch
23513	Crepe satin silk	Satin Crepe Silk	Cord & Sequence Embroidered with Stone work	Available	stitched Blouse	up to 38 Inch with margin of 42 inch
23514	Crepe satin silk	Organza Silk	Cord & Sequence Embroidered with Applique & Stone work	NA	stitched Blouse	up to 38 Inch with margin of 42 inch
23515	Crepe satin silk	Organza Silk	Cord & Sequence Embroidered with Stone work	NA	stitched Blouse	up to 38 Inch with margin of 42 inch
23516	Crepe satin silk	Malai Satin	Cord & Sequence Embroidered with Stone work	NA	stitched Blouse	up to 38 Inch with margin of 42 inch
23517	Tusser Silk	Satin Crepe Silk	Cord & Sequence Embroidered with Stone work	NA	stitched Blouse	up to 38 Inch with margin of 42 inch
23518	Crepe satin silk	Organza Silk	Cord & Sequence Embroidered	NA	stitched Blouse	up to 38 Inch with margin of 42 inch
23519	Two Tone Georgette Silk	Malai Satin	Sequence Embroidered with Stone work	NA	stitched Blouse	up to 38 Inch with margin of 42 inch
23520	Pure Crepe Georgette	Banglora Silk	Cord & Sequence Embroidered with Stone work	NA	stitched Blouse	up to 38 Inch with margin of 42 inch
23521	Net Organza Georgette	Satin Crepe Silk	Cord & Sequence Embroidered	NA	stitched Blouse	up to 38 Inch with margin of 42 inch
23522	Crepe satin silk	Satin Crepe Silk	Cord & Sequence Embroidered with Stone work	NA	stitched Blouse	up to 38 Inch with margin of 42 inch

**PRICE :-**

**23508-3775/-**

**23510-3635/-**

**23511-4445/-**

**23512-3005/-**

**23513-3675/-**

**23514-3885/-**

**23515-3995/-**

**23516-3465/-**

**23517-3465/-**

**23518-3275/-**

**23519-4205/-**

**23520-3665/-**

**23521-3675/-**

**23522-2945/-**





23508



23510



23511



23512



23518



23519



23520



23521



23522



23513



23514



23515



23516



23517



MOHMANTHAN™

*Majestica*